



Moore House, 2 Gatliff Road,
, SW1W

£1,125 Per Week,

NAPIER WATT

T: 0207 935 0011
E: enquiries@napierwatt.co.uk
W: napierwatt.co.uk

35 Berkeley Square, Mayfair, London, W1J 5BF







Description

Beautifully presented, modern two-bedroom apartment based in the popular Grosvenor Waterside development. This stunning apartment is presented in great condition throughout and offers approximately 830sq ft of living space. The accommodation comprises of an open plan living room kitchen with breakfast bar, master bedroom with en-suite bathroom, second double bedroom and a family bathroom. The apartment boasts underfloor heating, wooden flooring and new furniture and comes with a space in the underground car park.

Available now, furnished.

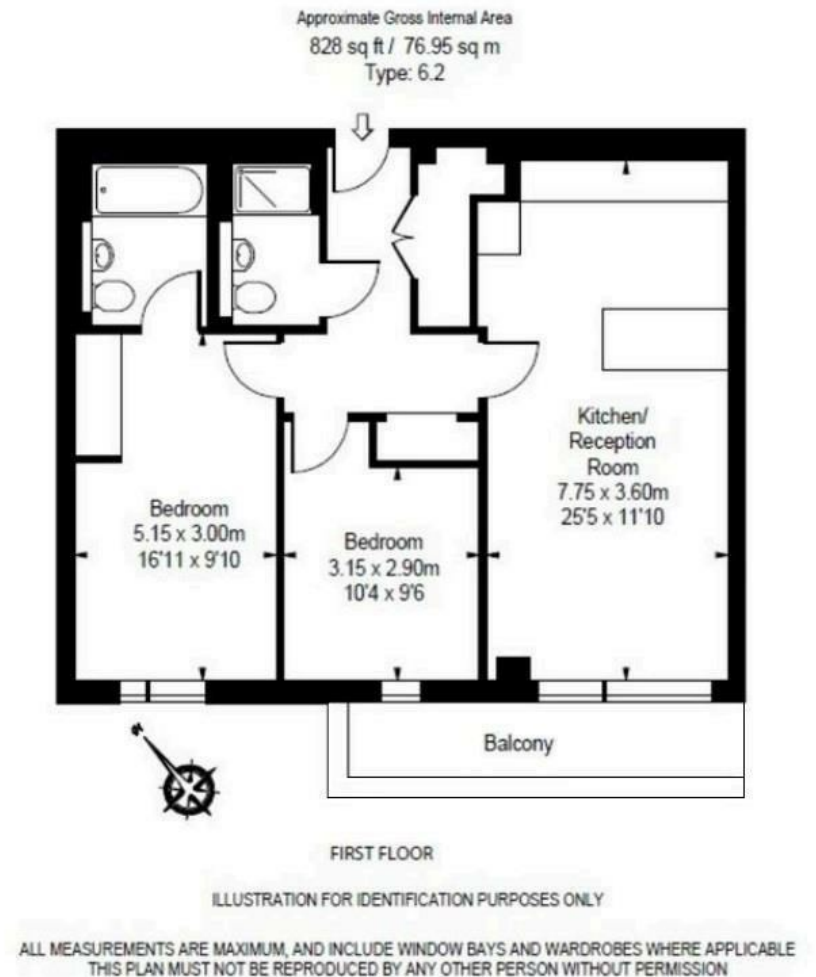
2 Bedroom : 2 Bathrooms : Porter : Lift : Underground Parking : Kensington & Chelsea Council Tax Band F : EPC Rating B

Key Features

- OPEN PLAN LIVING
- 24/HR CONCIERGE
- COMFORT COOLING
- UNDERGROUND PARKING
- BALCONY
- GYM ACCESS
- PASSENGER LIFT

Terms

Fees & Charges: Tenancies exceeding £100,000 Per annum £480 inc VAT, Tenancies where a company is a tenant £480 Inc VAT.



IMPORTANT: We would inform prospective purchasers that these sales particulars have been prepared as a general guide only. A detailed survey has not been carried out, nor the services, appliances and fittings tested. Room sizes should not be relied upon for furnishing purposes and are approximate. If floor plans are included, they are for guidance only and illustration purposes only and may not be to scale. If there are any important matters likely to affect your decision to buy, please contact us before viewing the property.